

Stormwater Management Organization and Finance- *Innovative Ways to Finance and Fund Stormwater Utilities*



ACWA Stormwater Summit
May 5th, 2010
Bruce Roll, Ph.D., M.P.H.
Director of Watershed Management

Wherever there's water, there's Clean Water.

CleanWater Services

Clean Water Services

- Public utility committed to protecting water resources

- Established 1970
- Serves 500,000 customers in Washington County
- Service area within Tualatin Basin
- 12 member cities



Wherever there's water, there's Clean Water.

CleanWater Services

Core Business Functions

- Wastewater Collection and Treatment
- Surface Water Management
- River Flow Management
- Regional Water Supply Planning



Wherever there's water, there's Clean Water.

CleanWater Services

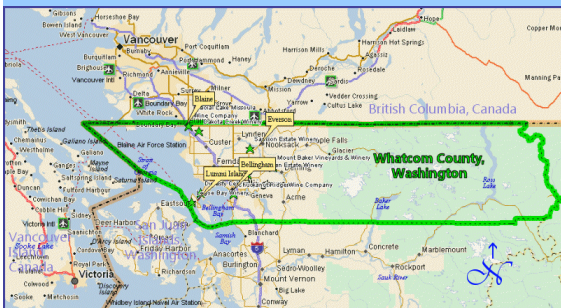
Whatcom County

- Population ~ 193,000
- Active agricultural community
- Largest tribal fishery in the Northwest
- Median house hold income \$63,000
- Measurable rain ~ 150 days
- Annual precipitation 36 inches
- Home-rule county government

Wherever there's water, there's Clean Water.

CleanWater Services

Whatcom County



Wherever there's water, there's Clean Water.

CleanWater Services

The Water Resources Tidal Wave of 1999

- Phase II Stormwater Regulations
- HB 2514 Watershed Planning Act
- HB 2496 Salmon Recovery Act
- ESA listings for Chinook and Bull trout
- Shellfish closers
- Nooksack Flooding
- Bellingham by cleanup
- Update to Critical Areas Ordinance

Wherever there's water, there's Clean Water.

CleanWater Services

Fast Forward 2005

- Watershed Management Plan adopted
- Salmon Recovery Plan adopted by NOAA
- Critical Area Ordinance adopted
- Phase II stormwater permit issued
- Shellfish harvest open again

Wherever there's water, there's Clean Water.



Phase II Stormwater Permit Regulated Areas



Wherever there's water, there's Clean Water.

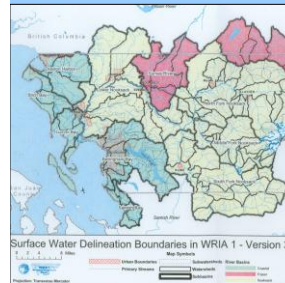


A Career Moment

Wherever there's water, there's Clean Water.



Weaving Watershed Planning and Stormwater Together

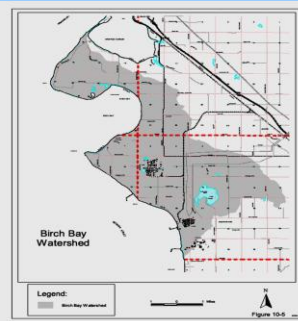


- Delineation of Watersheds
- Water Quality
- Water Quantity
- Instream Flows
- Habitat Needs
- Land use Needs

Wherever there's water, there's Clean Water.



Birch Bay, Washington



- 20 miles North of Bellingham
- Tourist destination
- Shellfish harvesting
- Birch Bay State Park
- Coho habitat
- Active growth
- Flooding and erosion
- Loss of aquatic habitat
- Community wants action

Wherever there's water, there's Clean Water.



Birch Bay Watershed and Aquatic Resource Management District



- Subzone of Flood Control District
- Boundary for stormwater utility
- Boundary for land use overlay
- Establishment method
- Resource directed

Wherever there's water, there's Clean Water.



What Do You Feed the Dogs?



Show Me the Money

- **Flood Control Zone District Fee**
 - County-wide
 - Established in 1992
 - Fee doubled in 1999
- **Flood Control Zone District Tax**
 - County-wide
 - Fee converted to property tax 2004
- **Subzone Created**
 - Watershed Boundary
 - Impervious-surface stormwater fee

Wherever there's water, there's Clean Water.

CleanWater Services

Governance

- Board of Flood Control Zone District
- Home-rule charter
- Subzone Advisory Committee
- Flood Zone Advisory Committee
- Public Works Surface Water CIP

Wherever there's water, there's Clean Water.

CleanWater Services

Parting Comments

- Did it work?
- Advantages
 - Watershed boundaries
 - Tailored for each watershed's needs
 - Addresses both ecological and stormwater needs
- Disadvantages
 - General purpose governance
 - General fund challenges
- What is next?

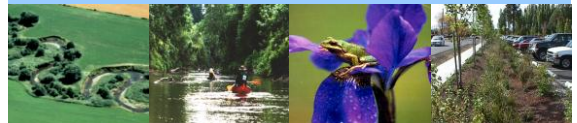
Wherever there's water, there's Clean Water.

CleanWater Services

"We are here to make another world"



Questions?



ACWA Stormwater Summit
May 5th, 2010
Bruce Roll, Ph.D., M.P.H.
Director of Watershed Management

Wherever there's water, there's Clean Water.

CleanWater Services